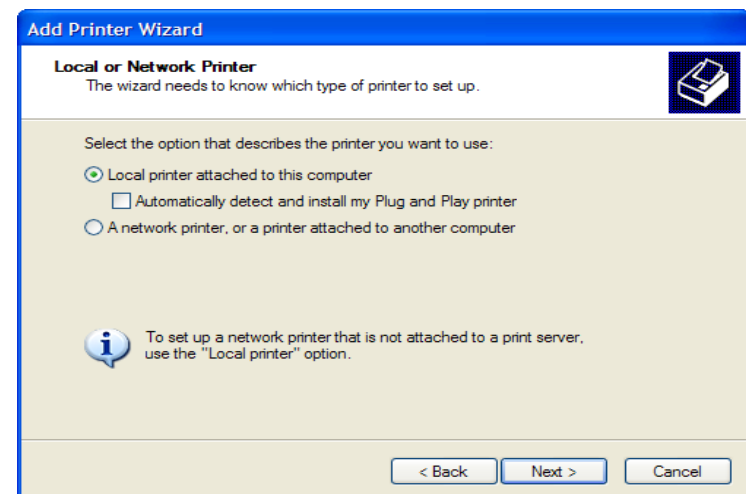
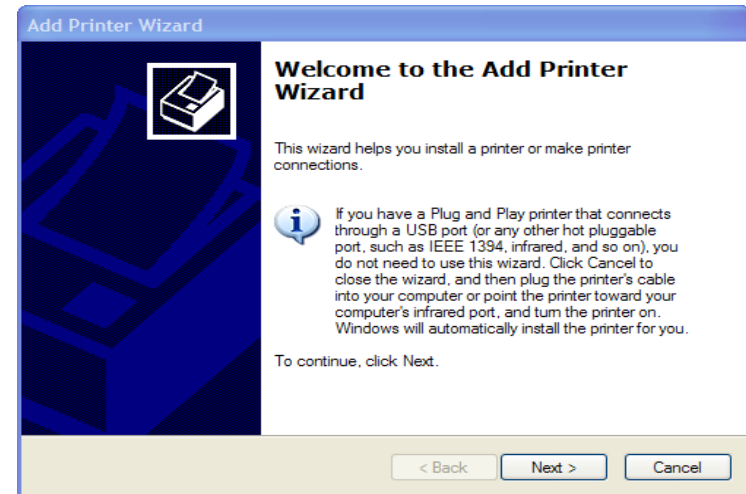


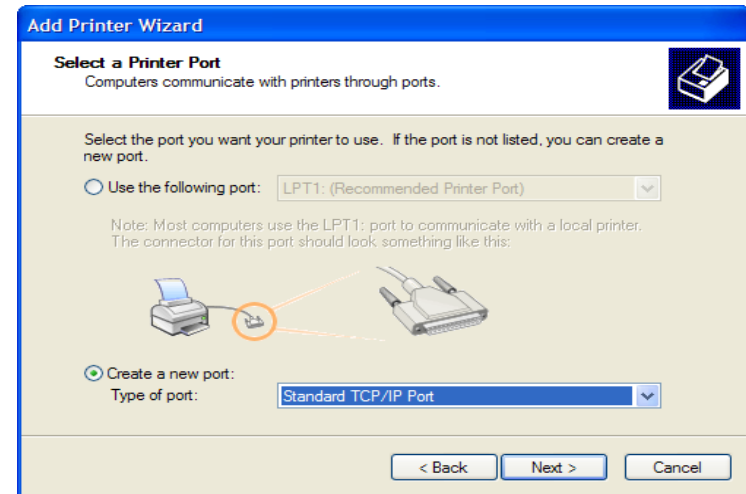
Adding Library Printer in Windows XP

- Click the **Start button**
- Click **'Printers and Faxes'**
- Click **'Add a Printer'**
- You should see the **'Welcome to the Add Printer Wizard'**
- Click **Next** to get to the Add Printer Wizard
- Select **Local Printer** and **deselect** 'Automatically detect and install...'



Creating a TCP/IP Printer Port

- You must install the Library Printer on a **TCP/IP port**
- Select Create new port and from the drop down box select **Standard TCP/IP Port**
- Click **Next** on the following screen to continue



Assigning the IP Address

- Key in the Library Printer IP address **192.168.1.58**
- Click Next and then Next again to assign **Parallel 1** as the Device Port

Add Standard TCP/IP Printer Port Wizard

Add Port
For which device do you want to add a port?

Enter the Printer Name or IP address, and a port name for the desired device.

Printer Name or IP Address: 192.168.1.58

Port Name: IP_192.168.1.58

< Back Next > Cancel

Additional Port Information Required

The device has multiple Ports.

The selected device has multiple ports. Choose the port from the given list. If the port you want to use is not in the list then go back to the previous page and make sure that the information that you entered is correct.

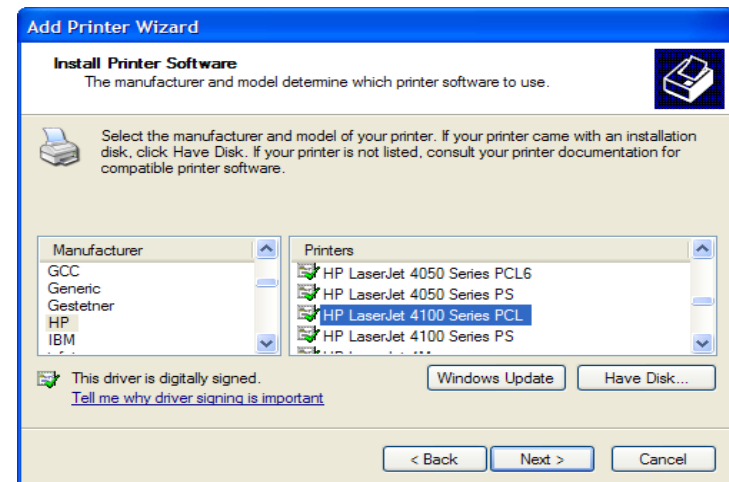
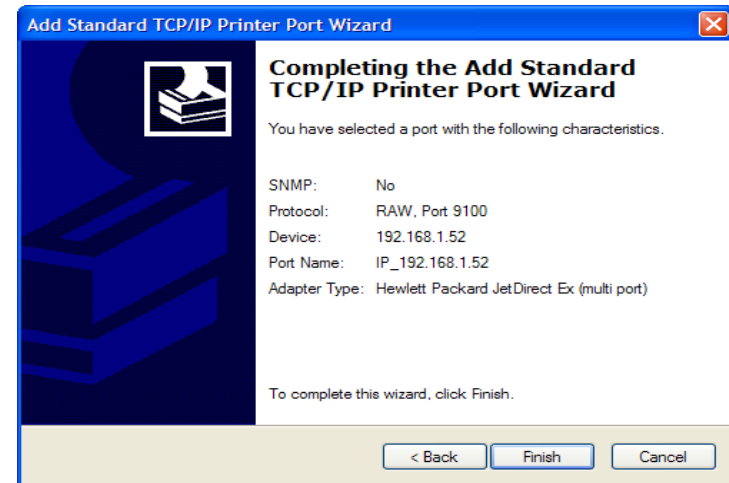
Device Port

Parallel 1

< Back Next > Cancel

Selecting the Printer Driver

- Click **Next** to complete the TCP/IP Port setup Wizard
- Install the printer software for **HP**
- Select either
HP LaserJet 4100 Series PCL
HP LaserJet 4200 Series PCL
- Click **Next** to continue



Naming the Library Printer

- Add – **Library** to the name of the printer to distinguish it from your local printers
- Choose **No** when asked if you want to use this printer as the default.
- Click **Next** to continue
- Click **Finish** to complete

